

**Test:** Primary 5 Science (Term 1) - Nan Hua (2020)

**Points:** 12 points

**Name:** \_\_\_\_\_

**Score:** \_\_\_\_\_

**Date:** \_\_\_\_\_

**Signature:** \_\_\_\_\_

Select multiple choice answers with a cross or tick:

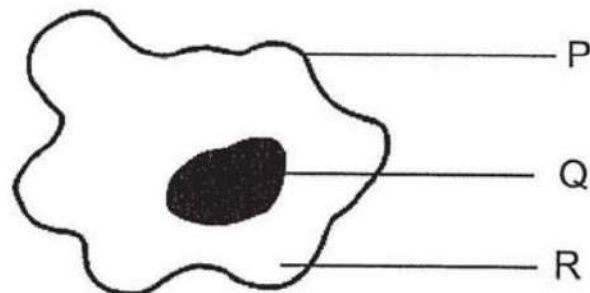
Only select one answer

Can select multiple answers

**Question 1 of 14**

Primary 5 Science (Term 1) 2 pts

The diagram below shows a cell.



Which the following statements about the cell is/are correct?

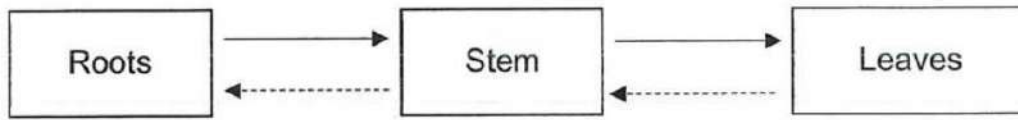
- A Part R controls cell activities.
- B The cell is unable to make food.
- C Part Q gives the cell a regular shape.
- D Part P controls substances entering and leaving the cell.

- 
- A) A and C only
  - B) B and D only
  - C) B, C and D only
  - D) A, B, C and D

**Question 2 of 14**

Primary 5 Science (Term 1) 2 pts

The flow chart below shows how substances T and U are transported in a plant.



**Key:**

- ▶ direction of flow of substance T
- ←----- direction of flow of substance U

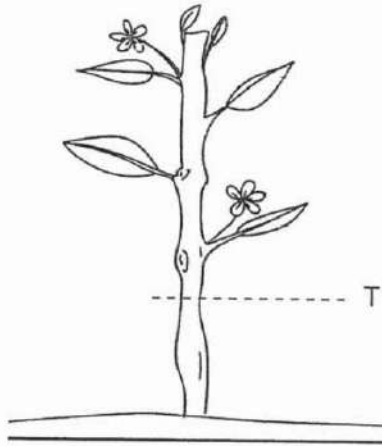
Which of the following represents the flow chart correctly?

- |                          |                             |                            |                                   |                                   |
|--------------------------|-----------------------------|----------------------------|-----------------------------------|-----------------------------------|
| <input type="radio"/> A) | <b>water-carrying tubes</b> | <b>food-carrying tubes</b> | <b>substance(s) T</b>             | <b>substance(s) U</b>             |
|                          | —▶                          | -----▶                     | water and dissolved mineral salts | food                              |
| <input type="radio"/> B) | —▶                          | -----▶                     | food                              | water and dissolved mineral salts |
| <input type="radio"/> C) | -----▶                      | —▶                         | water and dissolved mineral salts | food                              |
| <input type="radio"/> D) | -----▶                      | —▶                         | food                              | water and dissolved mineral salts |

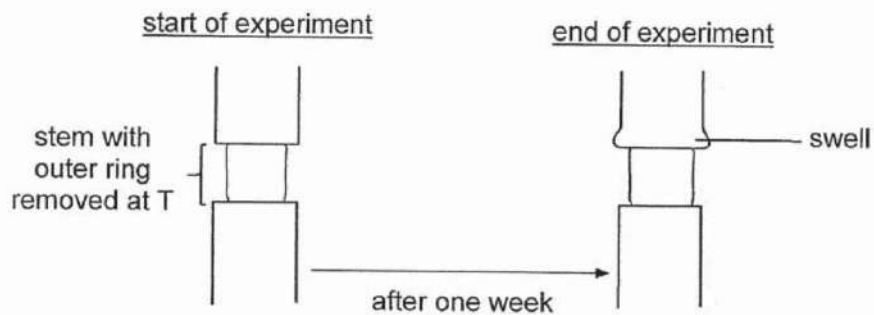
## Question 3 of 14

Primary 5 Science (Term 1) 2 pts

Malek removed the other ring of the stem of a plant in his garden at 'T' as shown in the diagram below.



He watered the plant daily. After a week, he noticed that the part of the stem above the ring swelled up as shown below.



Which one of the following statements explains the swell correctly?

- A) Water travelled up the water-carrying tubes in the stem and is gathered above the ring.
- B) Water travelled down the water-carrying tubes in the stem and is gathered above the ring.
- C) Food travelled up the food-carrying tubes in the stem and is gathered above the ring.
- D) Food travelled down the food-carrying tubes in the stem and is gathered above the ring.

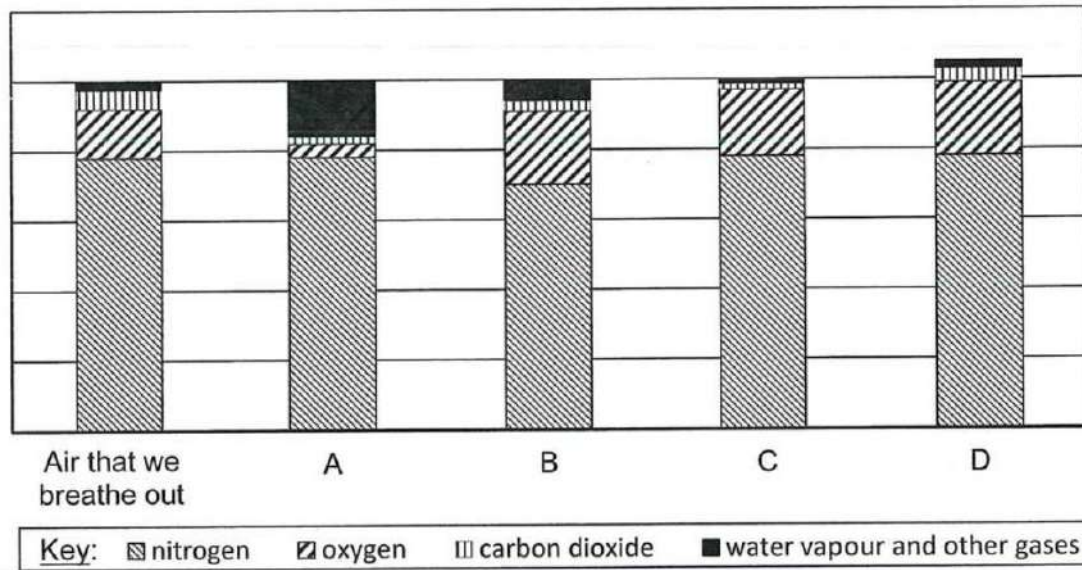
## Question 4 of 14

Primary 5 Science (Term 1)

2 pts

The graphs below show different composition of gases compared to the air that we breathe out.

Composition of Gases



Which graph, A, B, C or D, best represents the composition of gases of the air we breathe in?

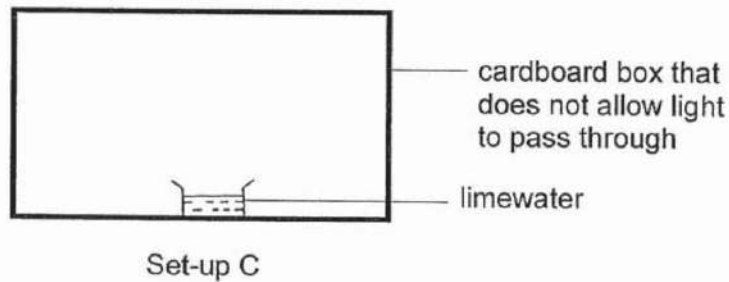
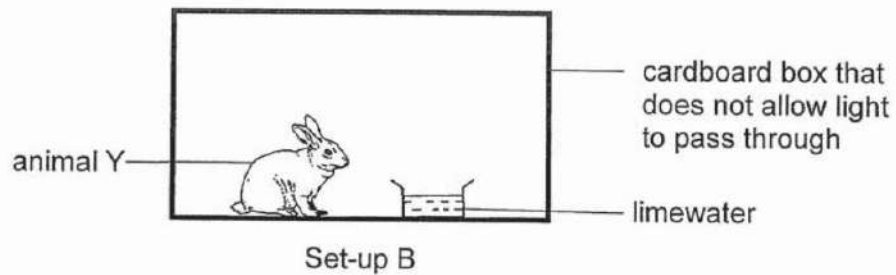
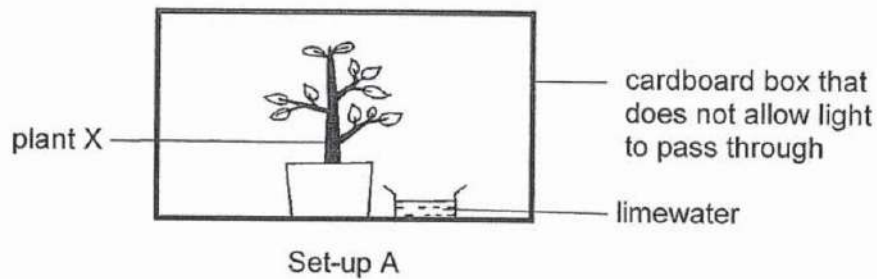
- A) A
- B) B
- C) C
- D) D

## Question 5 of 14

Primary 5 Science (Term 1)

2 pts

Sarah set up an experiment as shown below.



Limewater turns chalky in the presence of carbon dioxide. Sarah placed the set-ups near the window. After two hours, she checked on the limewater of all the set-ups. She found that the limewater in set-up C did not turn chalky.

Which one of the following could be her observations for set-ups A and B?

- A) 

<b>Set-up A</b>	<b>Set-up B</b>
turned chalky	turned chalky
- B) 

<b>Set-up A</b>	<b>Set-up B</b>
turned chalky	remained colourless
- C) 

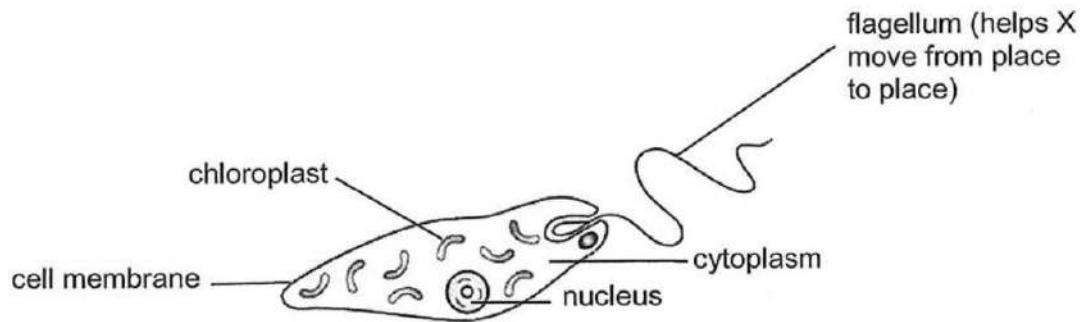
<b>Set-up A</b>	<b>Set-up B</b>
remained colourless	turned chalky
- D) 

<b>Set-up A</b>	<b>Set-up B</b>
remained colourless	remained colourless

**Question 6 of 14**

Primary 5 Science (Term 1) 1 pt

The diagram below shows a single-celled organism, X, which can be found near the top surface of both freshwater and seawater.



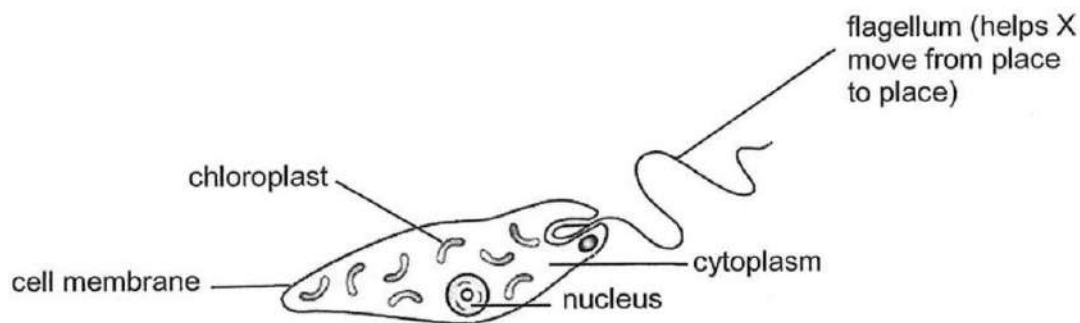
Using only the information given above, answer the following questions below.

Name one cell part in organism X which suggests that it could be a plant. (1 mark)

**Question 7 of 14**

Primary 5 Science (Term 1) 0 pts

The diagram below shows a single-celled organism, X, which can be found near the top surface of both freshwater and seawater.



Using only the information given above, answer the following questions below.

State the function of the part mentioned in the previous question. (1 mark)

*This question is designed for extended answers that parent/ teacher will have to assign and guide child to attempt after the test has been completed.*

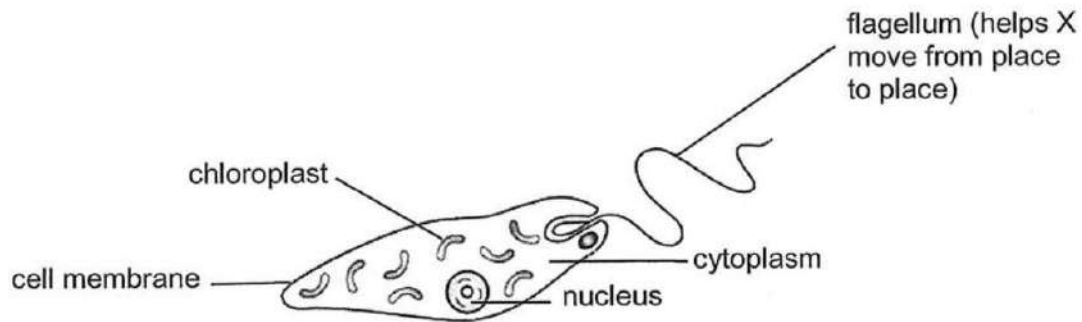
*Grading: This question type is not graded on this system and will not affect the final score as it was designed in such a way that it requires manual assistance.*

**Question 8 of 14**

Primary 5 Science (Term 1)

0 pts

The diagram below shows a single-celled organism, X, which can be found near the top surface of both freshwater and seawater.



Using only the information given above, answer the following questions below.

The cell has a flagellum that enables it to move in water. Explain how this helps organism X survive better in water. (1 mark)

This question is designed for extended answers that parent/ teacher will have to assign and guide child to attempt after the test has been completed.

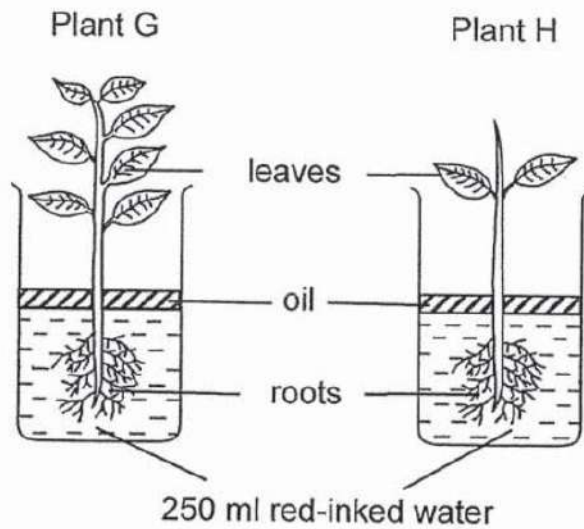
Grading: This question type is not graded on this system and will not affect the final score as it was designed in such a way that it requires manual assistance.

## Question 9 of 14

Primary 5 Science (Term 1)

1 pt

Mr Lim put two plants, G and H, in two similar beakers, each containing 250 ml of red-inked water as shown in the diagrams below.



Mr Lim recorded the amount of water in the beaker at the start and end of the experiment. Based on the set-ups above, write down 'G' or 'H' in the boxes below.

Plant	Amount of water (ml)	
	At first	After 3 hours
	250	230
	250	215

1. [ ]

Plant	At first	After 3 hours
	250	230

A. G

2. [ ]

Plant	At first	After 3 hours
	250	215

B. H

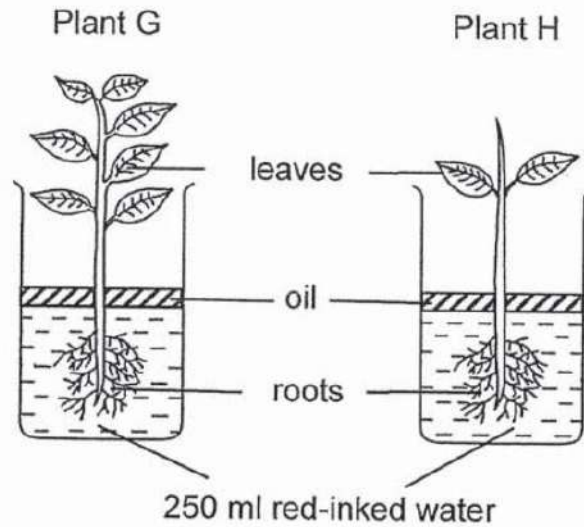


**Question 10 of 14**

Primary 5 Science (Term 1)

0 pts

Mr Lim put two plants, G and H, in two similar beakers, each containing 250 ml of red-inked water as shown in the diagrams below.



Explain clearly why oil is added to the surface of the water. (2 marks)

*This question is designed for extended answers that parent/ teacher will have to assign and guide child to attempt after the test has been completed.*

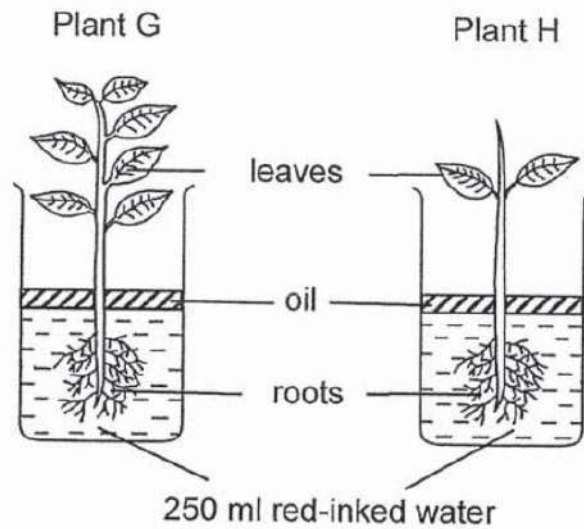
*Grading: This question type is not graded on this system and will not affect the final score as it was designed in such a way that it requires manual assistance.*

**Question 11 of 14**

Primary 5 Science (Term 1)

0 pts

Mr Lim put two plants, G and H, in two similar beakers, each containing 250 ml of red-inked water as shown in the diagrams below.



Based on the results that Mr Lim has recorded above, what can he conclude from the experiment? (1 mark)

*This question is designed for extended answers that parent/ teacher will have to assign and guide child to attempt after the test has been completed.*

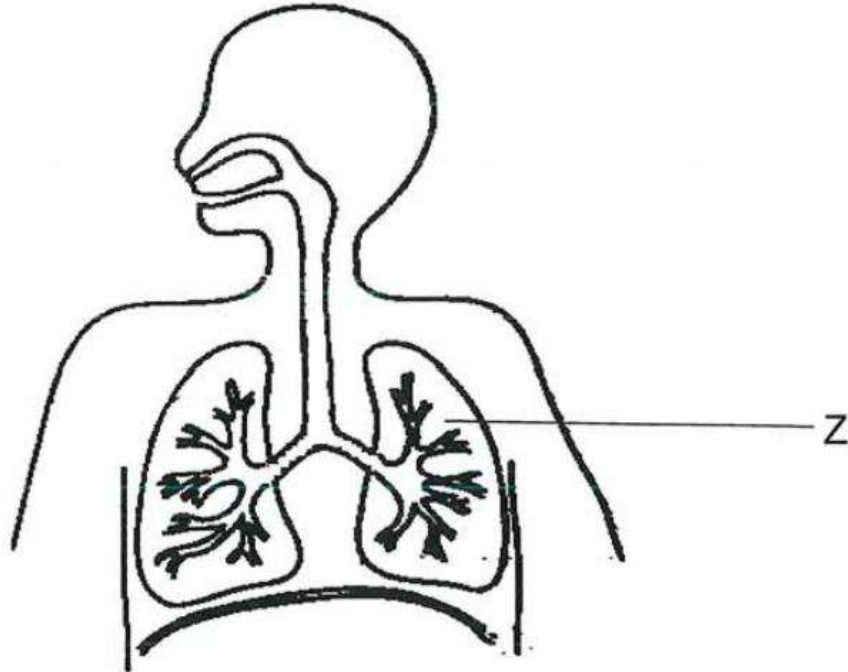
*Grading: This question type is not graded on this system and will not affect the final score as it was designed in such a way that it requires manual assistance.*

**Question 12 of 14**

Primary 5 Science (Term 1)

0 pts

The diagram below shows the respiratory system of a human.



State the function of part Z. (1 mark)

*This question is designed for extended answers that parent/ teacher will have to assign and guide child to attempt after the test has been completed.*

*Grading: This question type is not graded on this system and will not affect the final score as it was designed in such a way that it requires manual assistance.*

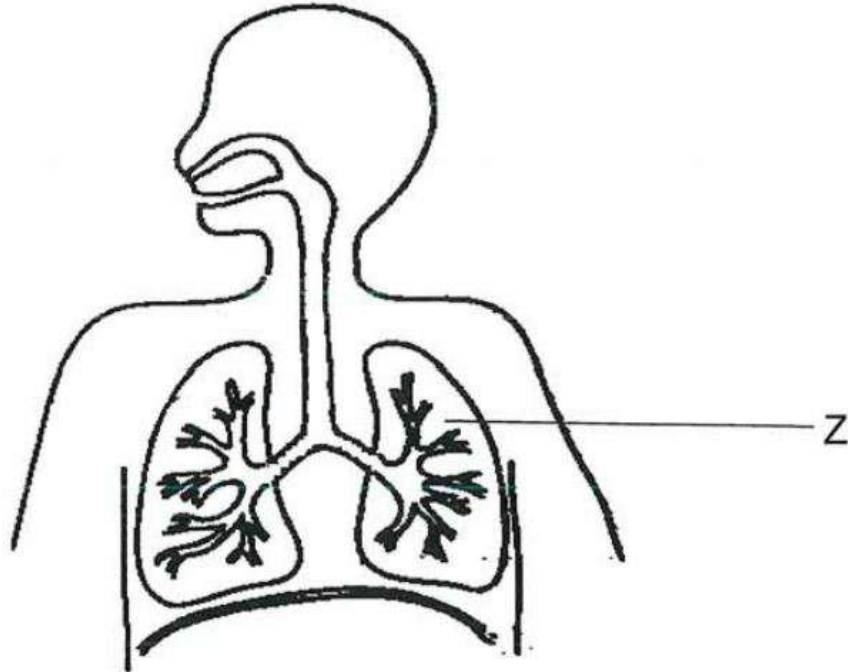
---

**Question 13 of 14**

Primary 5 Science (Term 1)

0 pts

The diagram below shows the respiratory system of a human.



Using arrows, trace the pathway of air from the surrounding to part Z in the diagram above. (1 mark)

*This question is designed for extended answers that parent/ teacher will have to assign and guide child to attempt after the test has been completed.*

*Grading: This question type is not graded on this system and will not affect the final score as it was designed in such a way that it requires manual assistance.*

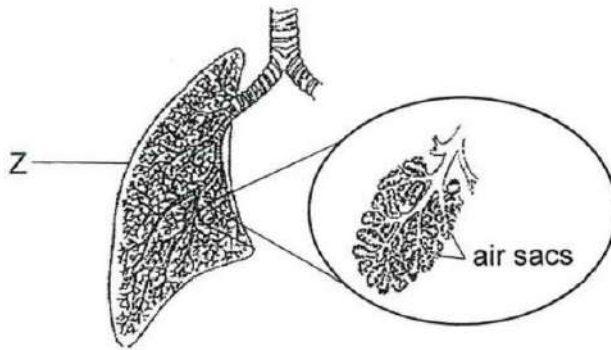
---

**Question 14 of 14**

Primary 5 Science (Term 1)

0 pts

Part Z contains many air sacs shown in the diagram below.



The air sacs are surrounded by many tiny blood vessels. Explain how having many air sacs help to speed up gaseous exchange. [1]

*This question is designed for extended answers that parent/ teacher will have to assign and guide child to attempt after the test has been completed.*

*Grading: This question type is not graded on this system and will not affect the final score as it was designed in such a way that it requires manual assistance.*

---